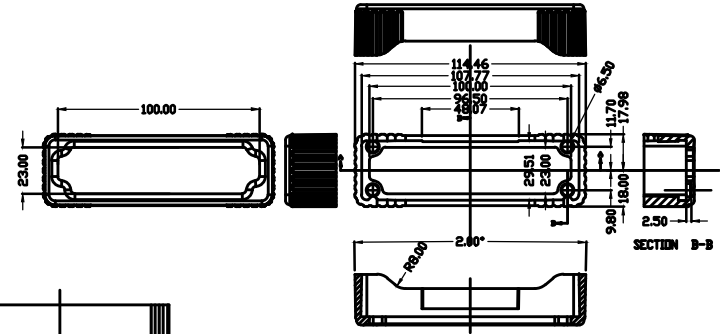


SK-2 SEALING KIT  
Optional Accessory

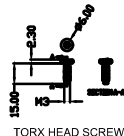


END PLATE



SECTION A-A

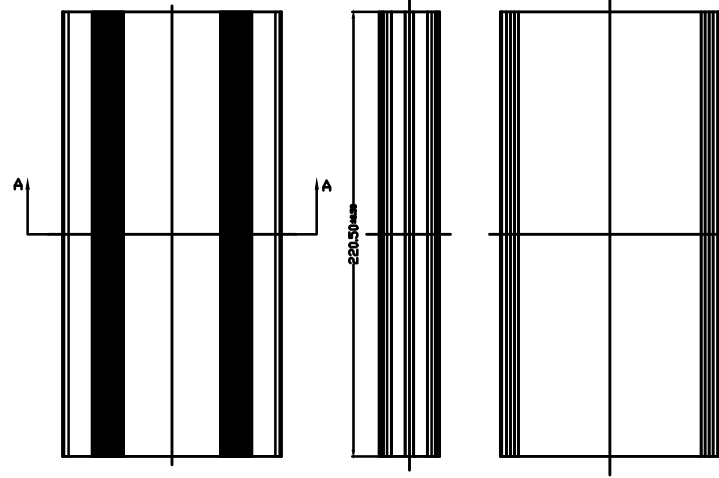
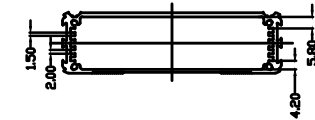
EC2 End Cap Optional Accessory



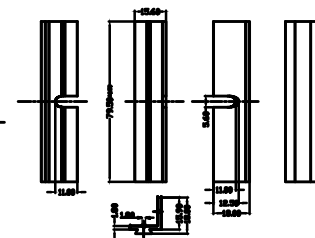
TORX HEAD SCREW



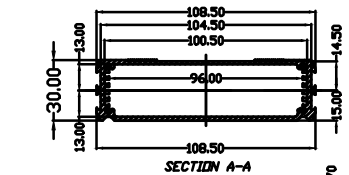
SEALING WASHERS



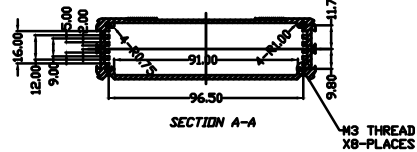
ENCLOSURE PROFILE



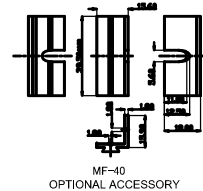
MF-80  
OPTIONAL ACCESSORY



SECTION A-A



SECTION A-A



MF-80  
OPTIONAL ACCESSORY

Mounting Flanges Optional Accessory (Sold Individually)	
40 mm Mounting Flange Part #	Color
MF40-BK	Black
MF40-BL	Blue
MF40-GD	Gold
MF40-GR	Green
MF40-RO	Red
MF40-SI	Silver

COLOR LEGEND			
Part #	Anodized Color	Flange Part #	Color
B2-220 BK	Black	MF80-BK	Black
B2-220 BL	Blue	MF80-BL	Blue
B2-220 GD	Gold	MF80-GD	Gold
B2-220 GR	Green	MF80-GR	Green
B2-220 RO	Red	MF80-RO	Red
B2-220 SI	Silver	MF80-SI	Silver

Optional End Caps (sold in pairs)	
Part #	Color
EC-2BK	Black
EC-2BL	Blue
EC-2GN	Green
EC-2RD	Red
EC-2GY	Gray

Sealing Kit - Optional Accessory	
Part #	Description
SK-2	NEH 4/IP65 Sealing Kit for ALL B-2 Series Enclosures

		Revision: 6.1	
		Model:	
Title: B2-220 MASTER DRAWING		Dwg. No.:	Part No.:
Material: Aluminum 6063-T6(HE9)	TOLERANCE: all dimension in mm unless otherwise specified.	Color:	Drn. Date: Rudy 8/3/2018
Finish: Anodized BS 1615	1-5 ±0.10 5-50 ±0.30 50-200 ±0.50 ANGLE ±0.5°	Qty:	Chk. Date:
Proj.:		Sheet of	App. Date:

THIS DRAWING IS THE PROPERTY OF AND MAY ENDOUR PROPRIETARY INFORMATION OWNED BY Box Enclosures. IT IS PROVIDED UNDER A CONFIDENTIAL RELATIONSHIP FOR A SPECIFIC PURPOSE. THE RECIPIENT AGREES TO USE IT ONLY FOR SUCH PURPOSE AND RETURN IT TO Box Enclosure UPON REQUEST.